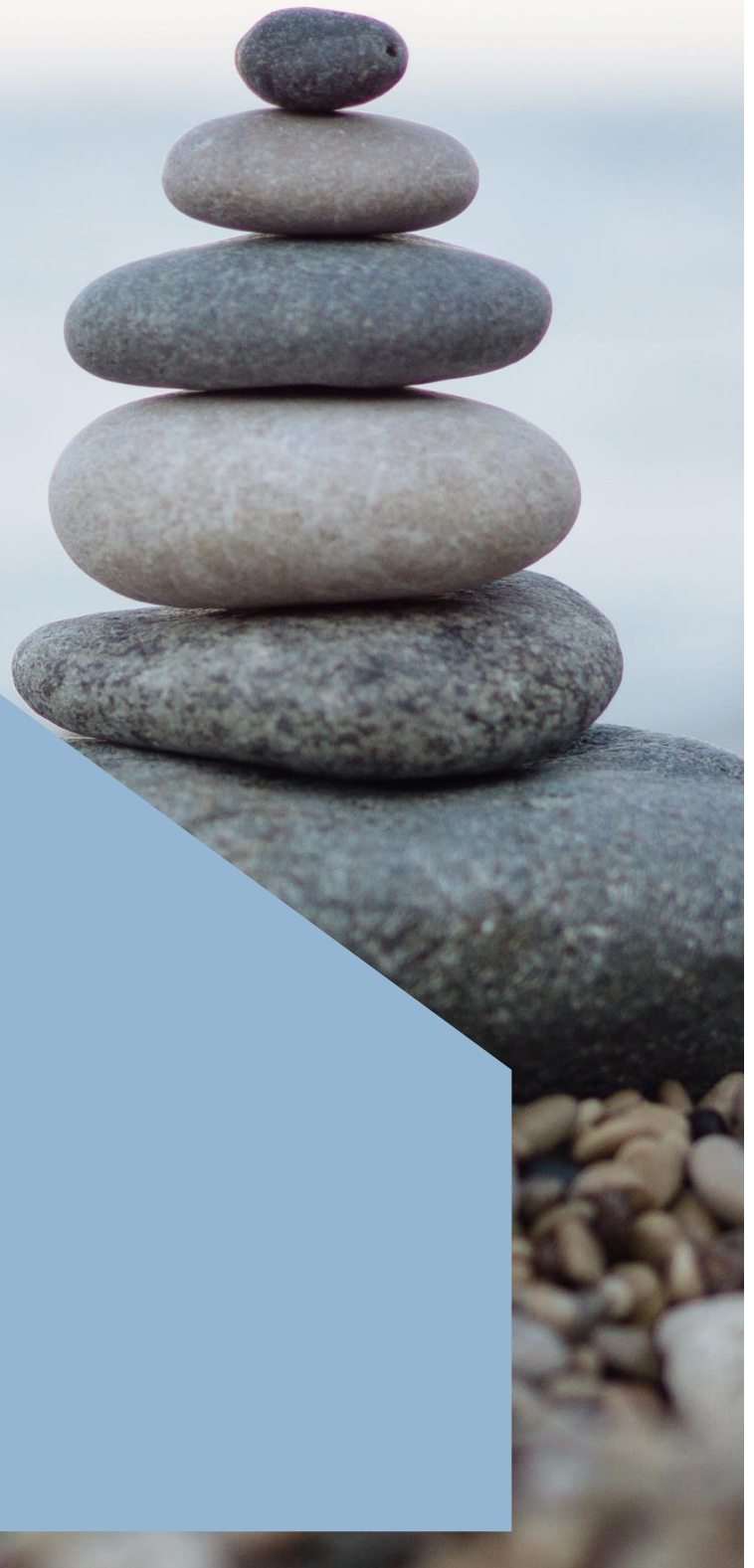


SWIFECT ERP

ENTERPRISE RESOURCE PLANNING



PT. SWIFECT SOLUSI INDONESIA
PRODUCT BROCHURE
JAN 2020

WHY SWIFECT ERP

SWIFECT ERP

In the most basic sense, ERP software is a tool that centralizes a company's database of information, automates routine tasks and simplifies business processes.

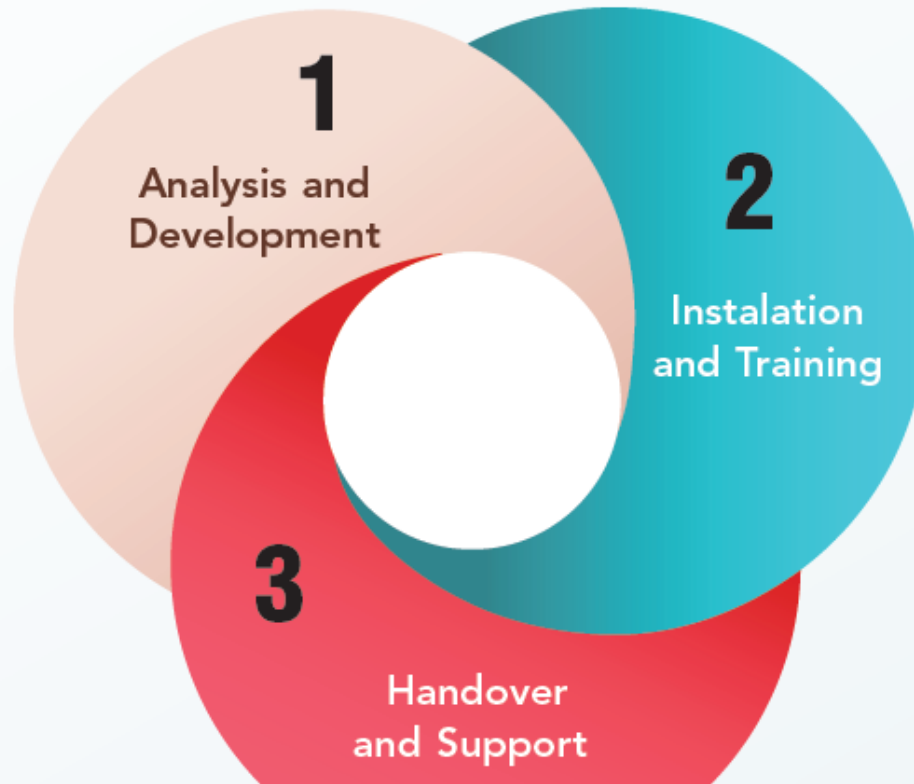
The end-goal in using this tool is to optimize operations and free up employee time so they can work on more instinctual tasks. These objectives can lead to an increase in revenue margins and efficiencies while improving communication across the company.

- Accounting
- Customer Relationship Management (CRM)
- Manufacturing
- Inventory Management
- Human Resources
- Analytics and Reporting



We combine the basic modules with requirements set by Indonesian Customs and work together with many Bonded Zone companies to help give our customers the solution they need





ADVANTAGES OF ERP

ERP systems are an asset for many organizations. They make your business run smoother by unifying and protecting your information, automating processes, and producing easy-to-understand reports.

With these and many more capabilities, the benefits of ERP systems in an organization make your day-to-day operations and long-term planning more efficient. Below are several of the biggest ERP benefits when implementing this type of software



PT. SWIFECT SOLUSI INDONESIA

RUKO RICH PALACE BLOK D16/4
JL. MERUYA ILIR NO. 36 – 40 RT08, RW07,
SRENGSENG KEMBANGAN, JAKARTA BARAT 11630

hans@swifect.com

(021) 2254 2657
0813 1471 9880